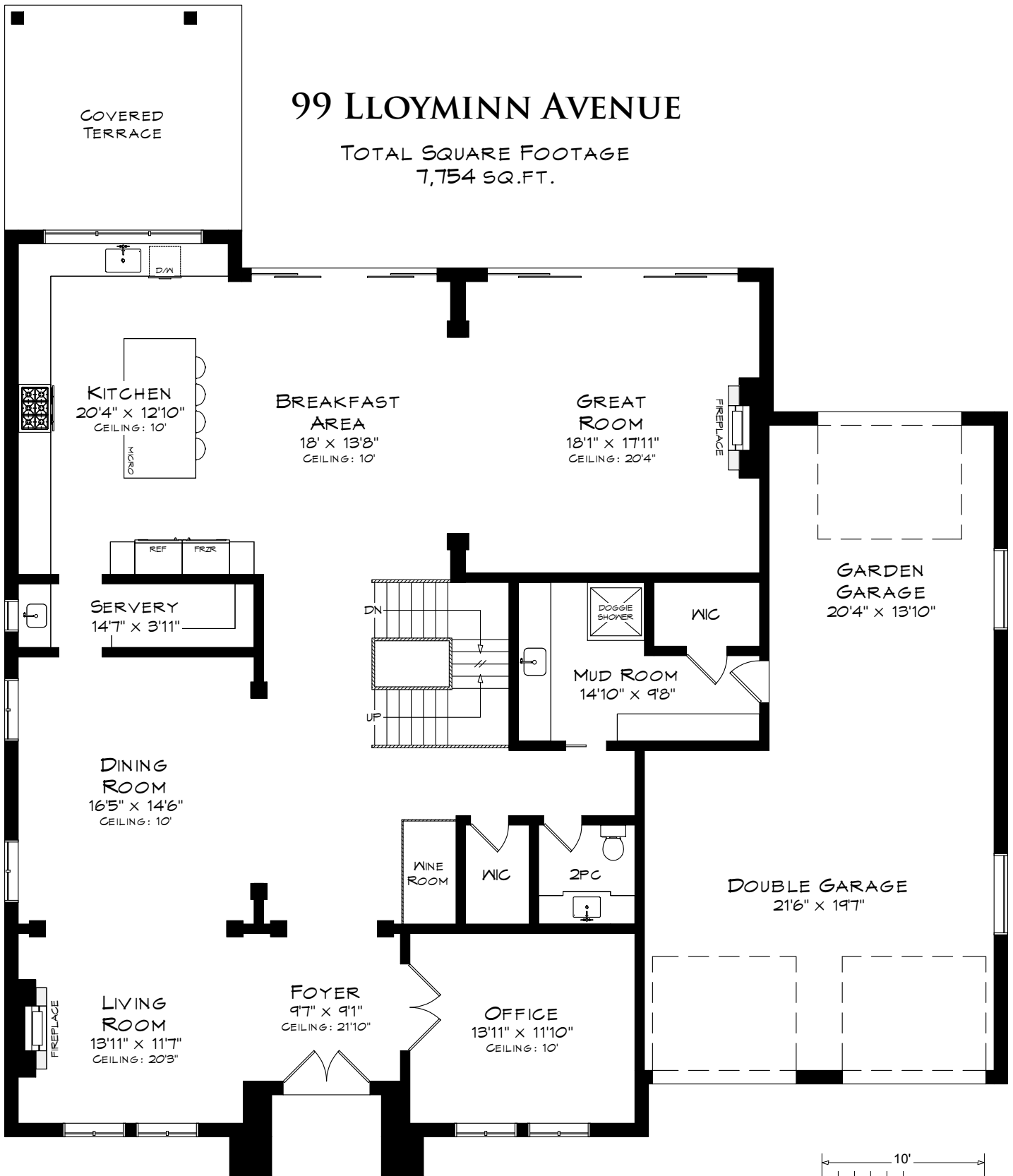


99 LLOYMINN AVENUE

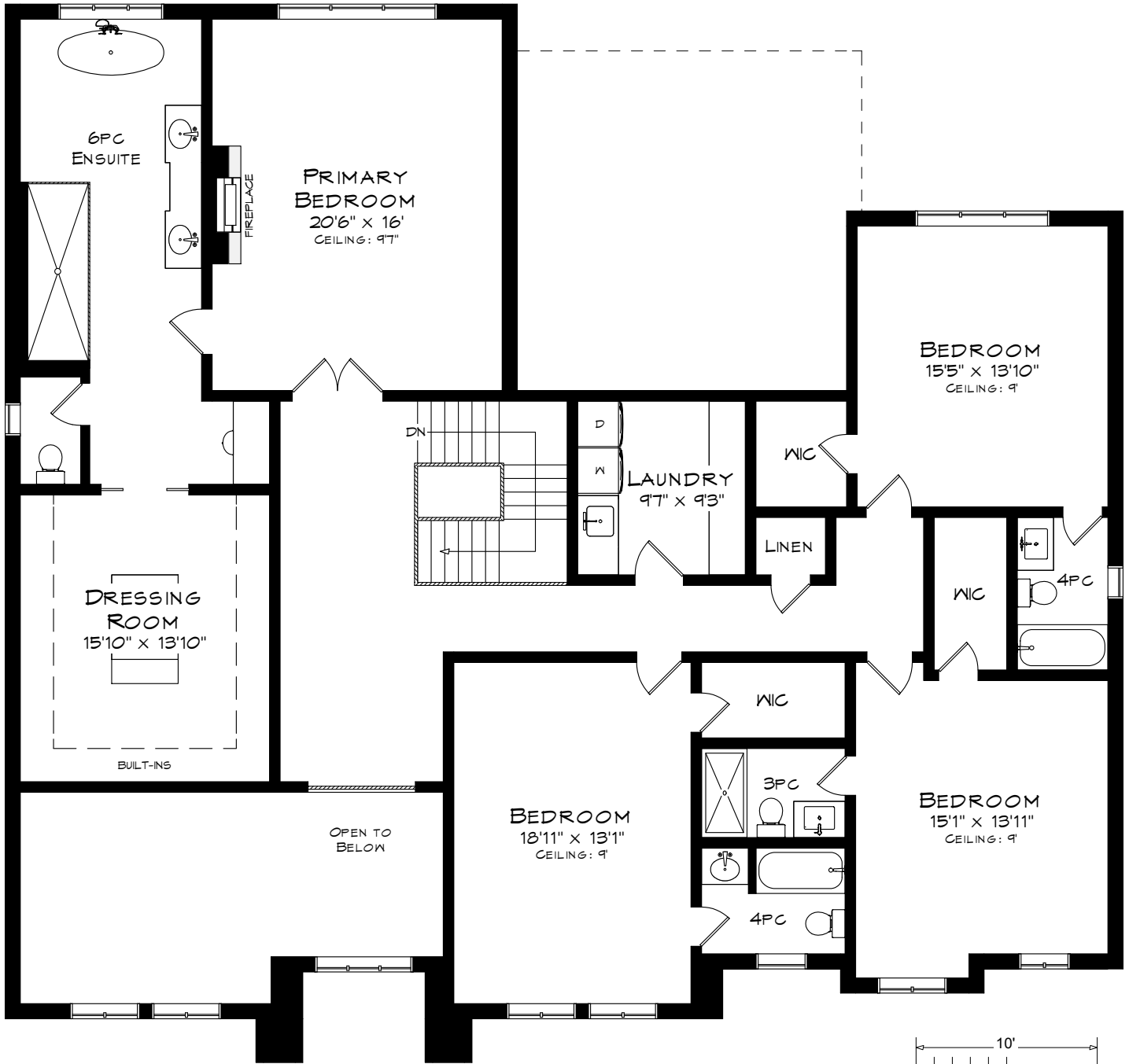
TOTAL SQUARE FOOTAGE
7,754 SQ.FT.



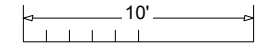
MAIN LEVEL
2,362 SQUARE FEET
+ 761 SF (GARAGE)

Measurements may not be 100% accurate
and should be used as a guideline only.
October - 2021

99 LLOYMINN AVENUE

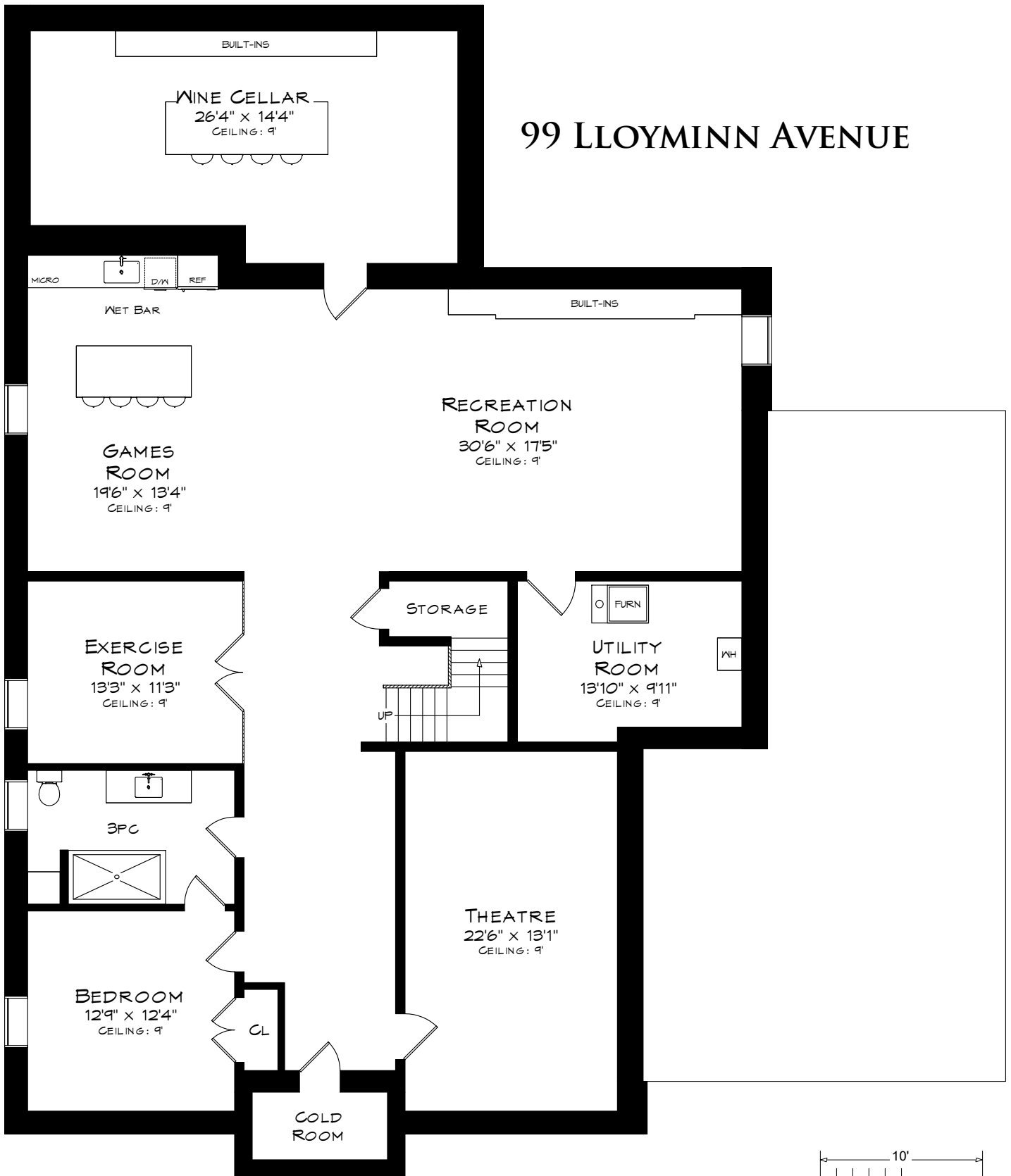


UPPER LEVEL
2,549 SQUARE FEET
+ 287 SF (OPEN TO BELOW)

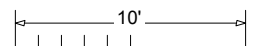


Measurements may not be 100% accurate
and should be used as a guideline only.
October - 2021

99 LLOYMINN AVENUE



LOWER LEVEL
2,843 SQUARE FEET



Measurements may not be 100% accurate
and should be used as a guideline only.
October - 2021