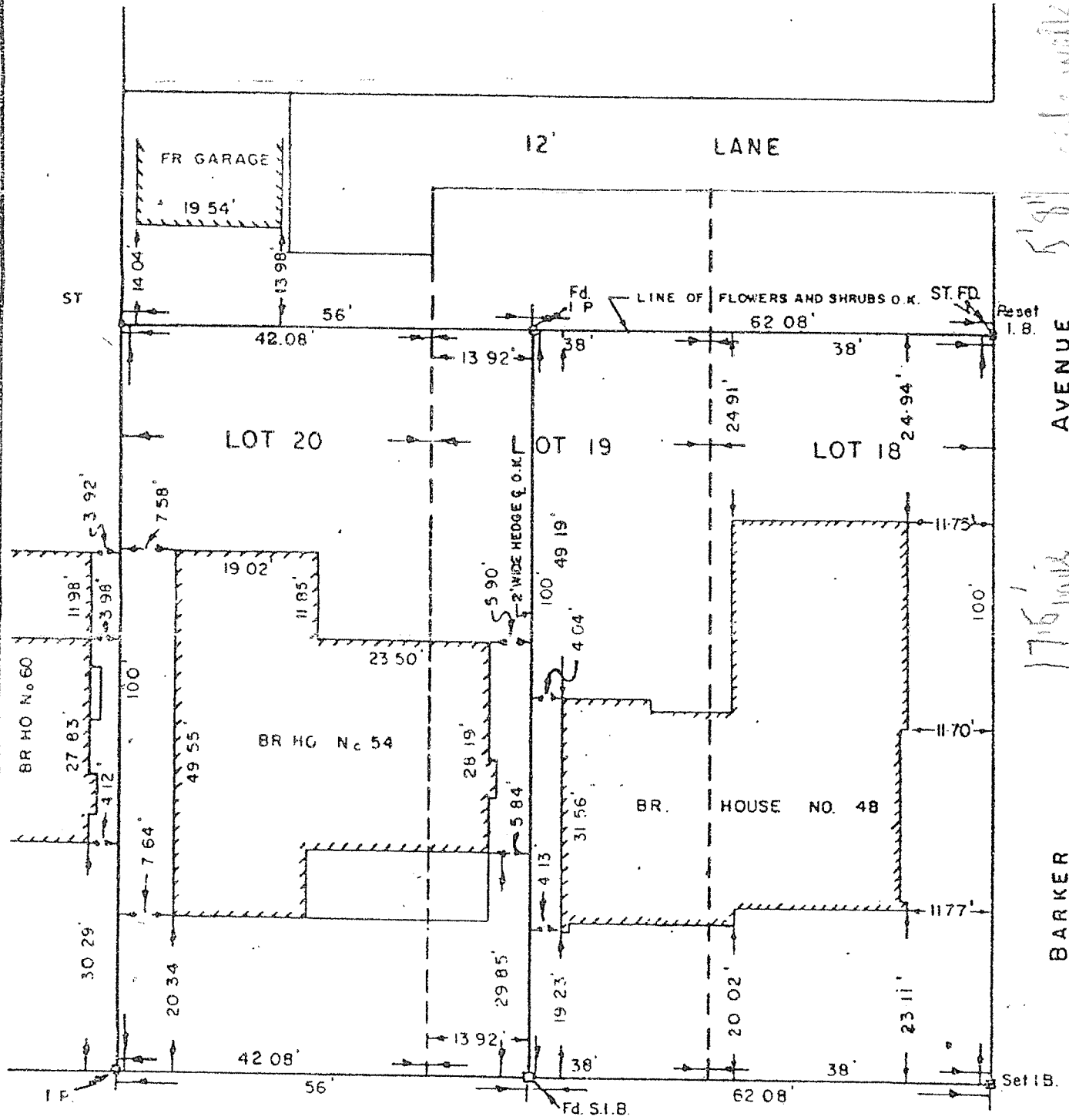
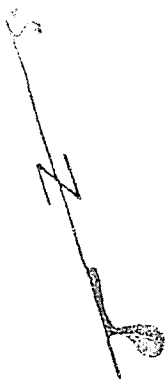


PLAN  
OF  
PART OF LOTS 18, 19 & 20  
KILBOGIE SURVEY REG. PLAN No. 437  
IN THE  
CITY OF HAMILTON  
SCALE 1 IN. = 20 FT.



INVERNESS

AVENUE

*John J. Keenan*  
ONTARIO LAND SURVEYOR  
HAMILTON, ONTARIO  
MAR 7, 1960

REVISED: 19 JULY, 1972.