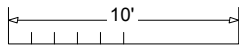
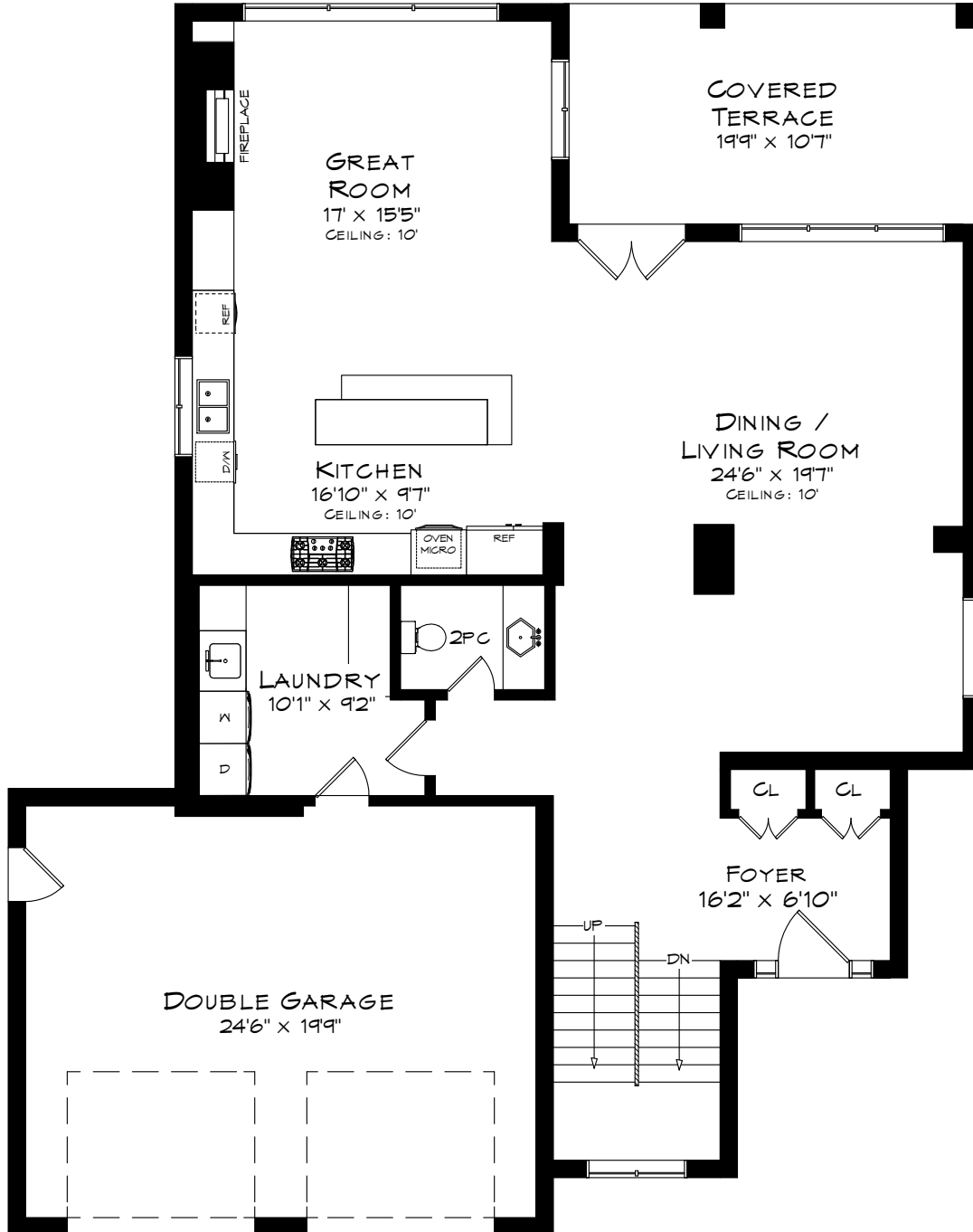


# 466 SHERIN DRIVE

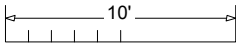
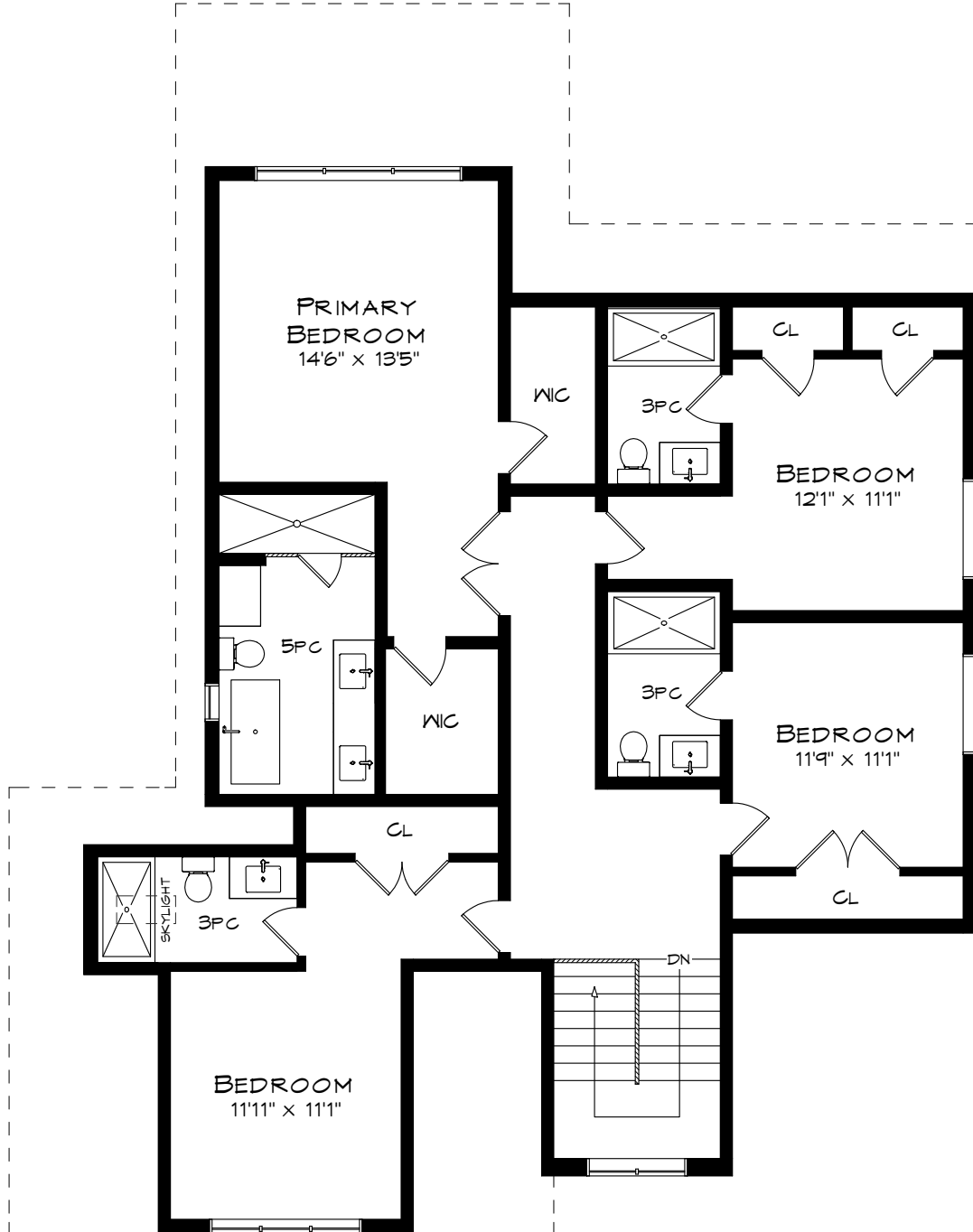
TOTAL SQUARE FOOTAGE  
4,584 SQ.FT.



Measurements may not be 100% accurate  
and should be used as a guideline only.  
June - 2021

MAIN LEVEL  
1,515 SQUARE FEET  
527 SF (GARAGE)

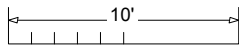
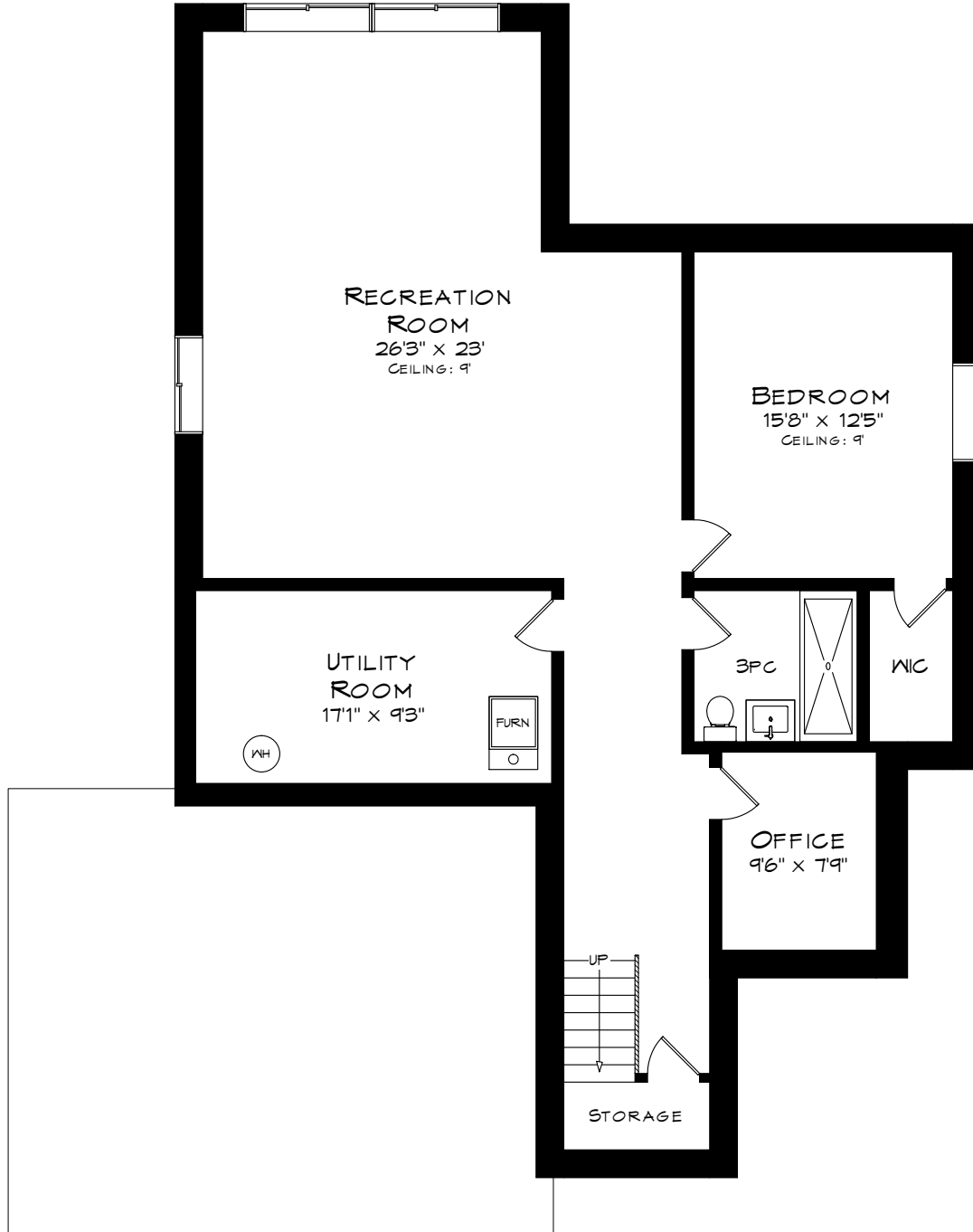
# 466 SHERIN DRIVE



Measurements may not be 100% accurate and should be used as a guideline only.  
June - 2021

UPPER LEVEL  
1,554 SQUARE FEET

# 466 SHERIN DRIVE



Measurements may not be 100% accurate and should be used as a guideline only.  
June - 2021

**LOWER LEVEL**  
**1,515 SQUARE FEET**