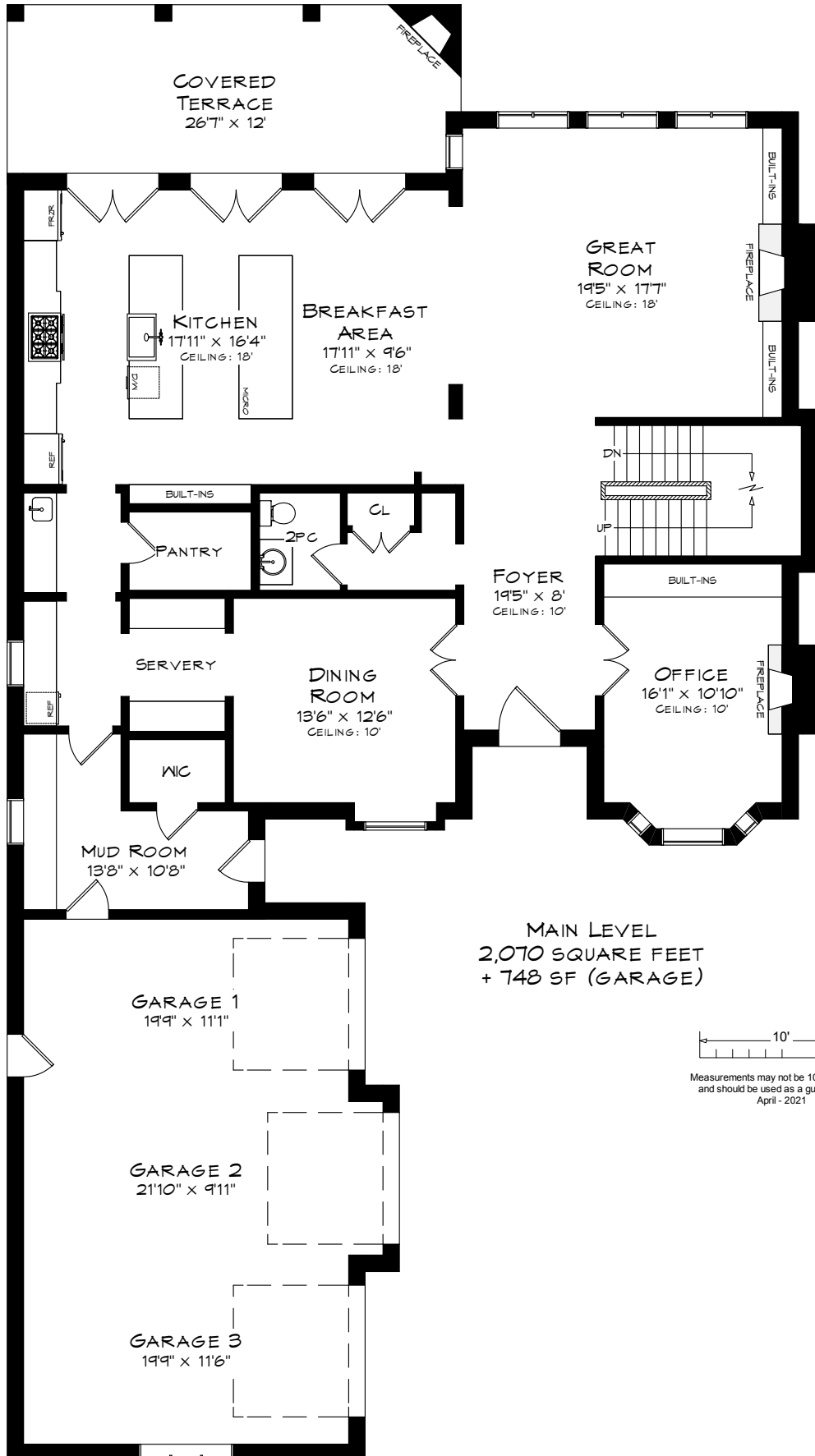
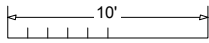


20 JERSEYVILLE ROAD W

TOTAL SQUARE FOOTAGE
6,980 SQ.FT.

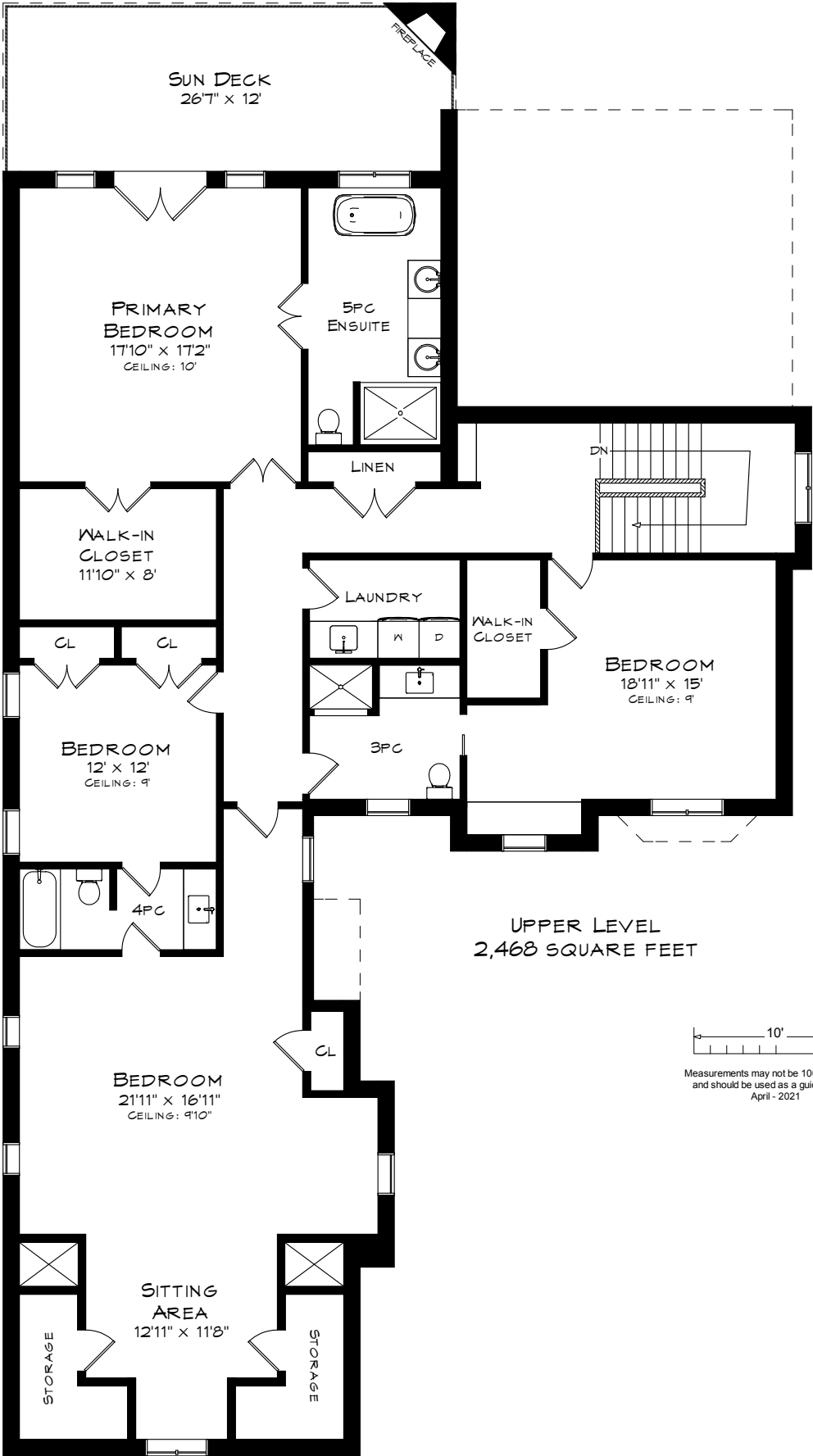


MAIN LEVEL
2,070 SQUARE FEET
+ 748 SF (GARAGE)

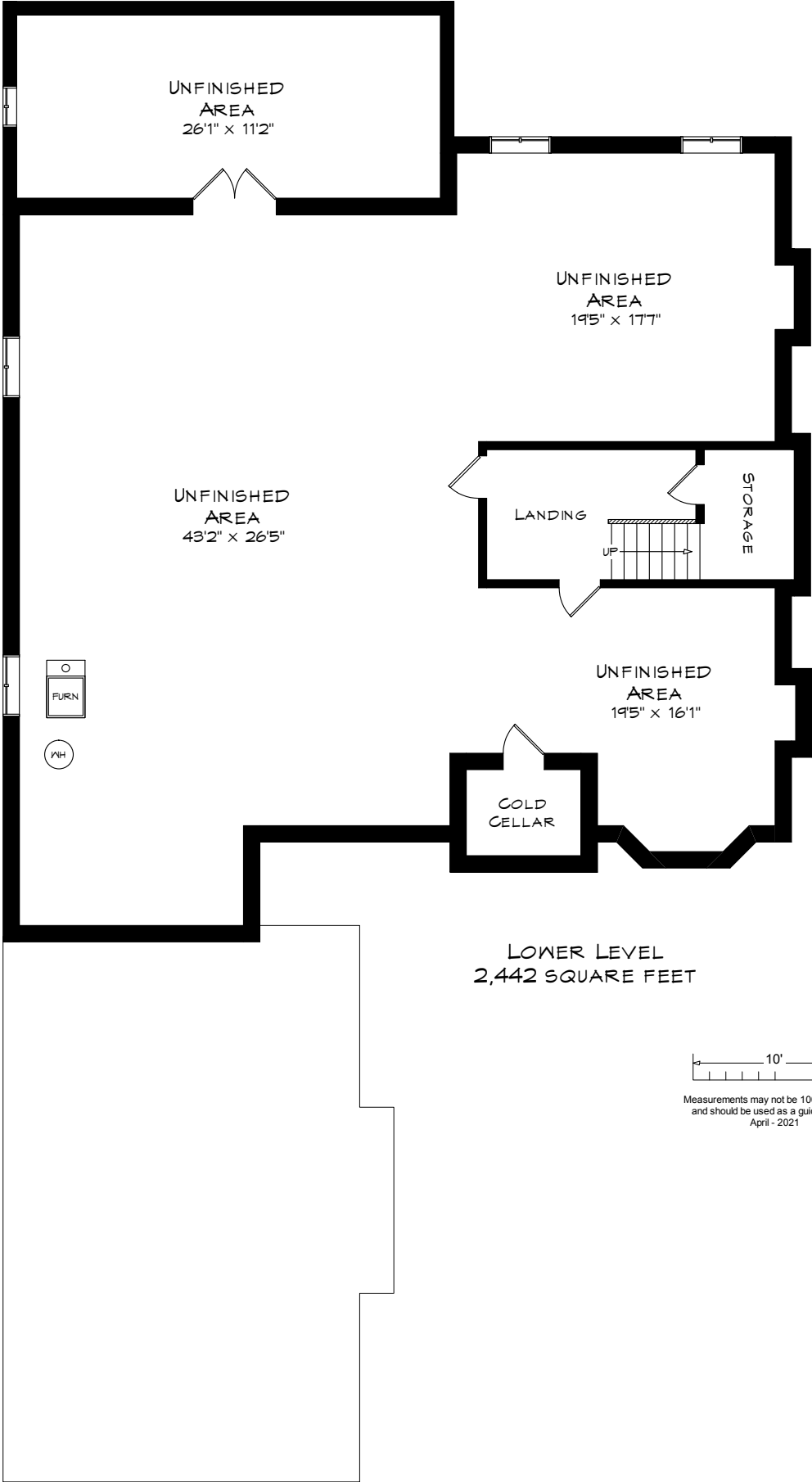


Measurements may not be 100% accurate
and should be used as a guideline only.
April - 2021

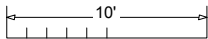
20 JERSEYVILLE ROAD W



20 JERSEYVILLE ROAD W



LOWER LEVEL
2,442 SQUARE FEET



Measurements may not be 100% accurate
and should be used as a guideline only.
April - 2021