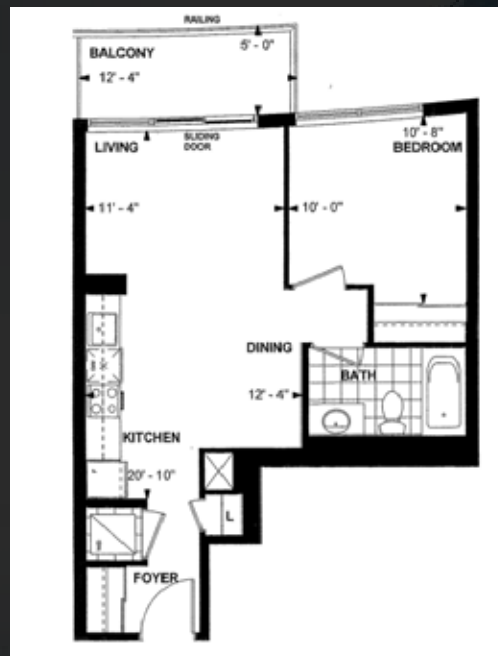


THANK YOU FOR HELPING US  
REDUCE OUR CARBON FOOTPRINT.



SCAN WITH YOUR PHONE CAMERA  
TO ACCESS MORE DETAILS, PHOTOS,  
VIDEO AND FLOOR PLANS.



Christopher Invidiata\*\* 905.339.3444  
Linda M. Ford\* 416.527.3677

**INVIDIATA**<sup>®</sup>  
eXp Realty, Brokerage

FOLLOW US TO JOIN THE MOVEMENT. THERE IS NO PLANET B.

f t i @INVIDIATAREALTY

INVIDIATA REALTY EXP REALTY, BROKERAGE | 86 WILSON STREET, DOWNTOWN OAKVILLE | 905.339.3444 | INVIDIATA.COM

\*\*Sales Rep & Team Leader \*Broker. All Square Footages Are Approximate. Information Is Subject To Errors And Omissions. E&O Not Intended To Solicit Properties Currently For Sale Or Buyers Under Contract

HOME  
COLLECTION

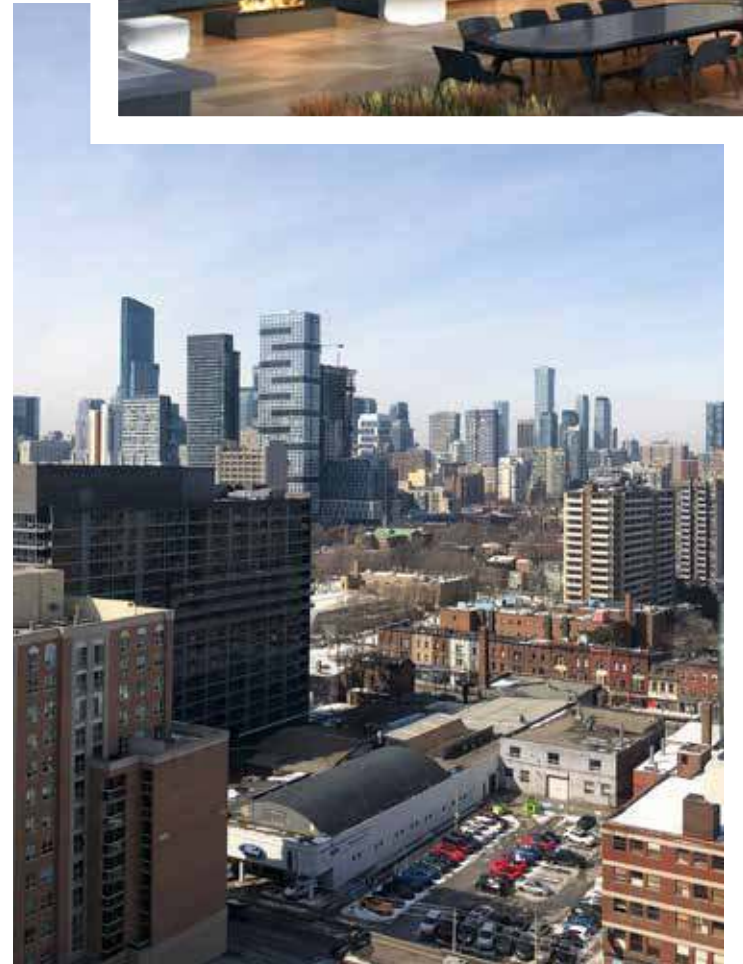
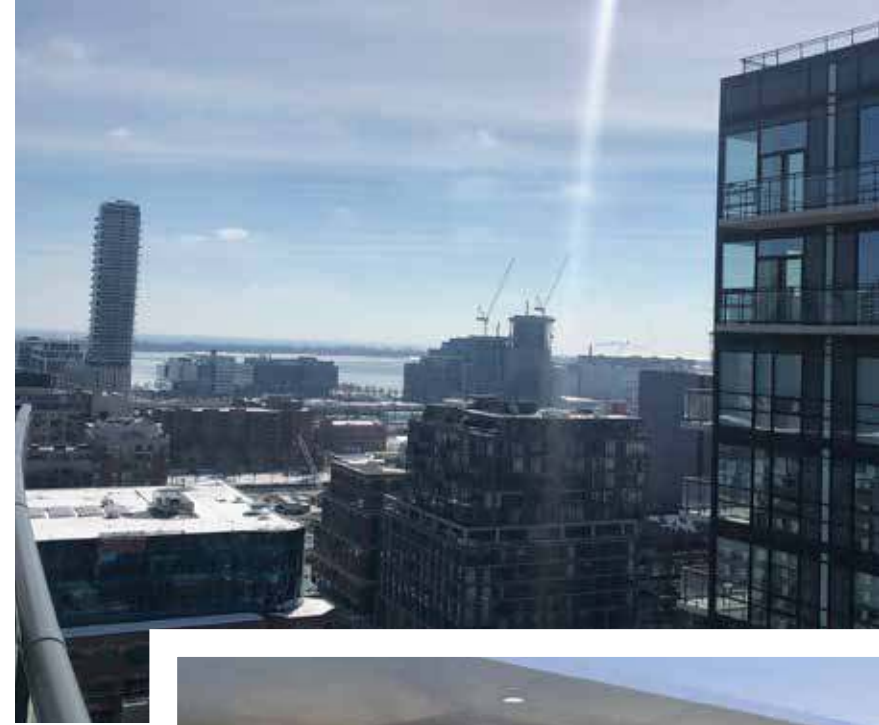
PENTHOUSE MAGNIFICENCE  
PH223 - 460 ADELAIDE STREET EAST, TORONTO

LAKE VIEWS FOR YOUR ENJOYMENT



"LUXURY MUST BE COMFORTABLE, OTHERWISE IT IS NOT LUXURY."

COCO CHANEL



Penthouse Magnificence In This 1 Bed With Soaring 10 Ft Ceilings. This Suite Features Approx 600 Sqft Of Luxury Living & Floor To Ceiling Windows Throughout. Upgraded Kitchen W/Breakfast Island, Stone Counters, B/I Fridge & S/S Appliances, Custom Backsplash Is A Chef's Dream. Open Concept Living Space Ideal For Entertainment Opens To A Balcony & Unobstructed Sensational City & Lake Views For Your Enjoyment. Walk Score=99. A Must See Penthouse! Parking Included. Close To St. Lawrence Mkt, The Distillery District, Sugar Beach, Don River Park, Many More. Transit At Doorstep. Hwy Access. Concierge. The Finest Of Amenities To Enjoy. Ensuite Laundry. Parking, Bike & Oversized Locker Included.



1 BEDROOMS | 1 BATHROOMS  
544 SQ.FT  
LISTED FOR \$2,100/MONTH