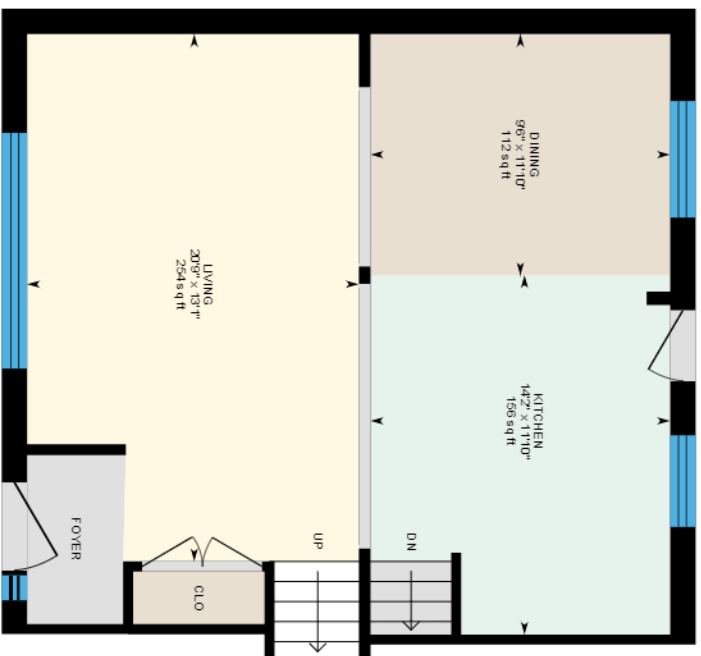
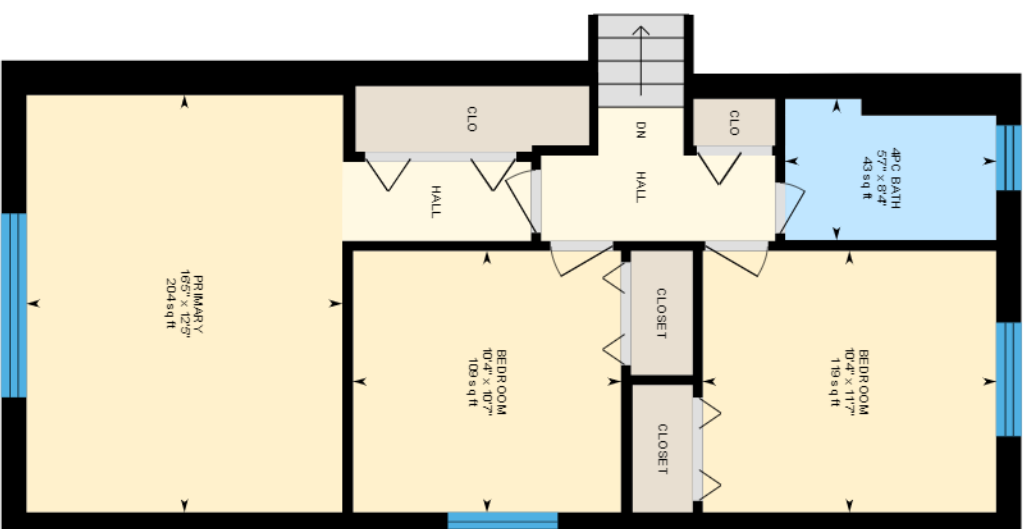


517 Wyner Crescent, Oakville, ON



1st Floor
666 Sq Ft



2nd Floor
754 Sq Ft

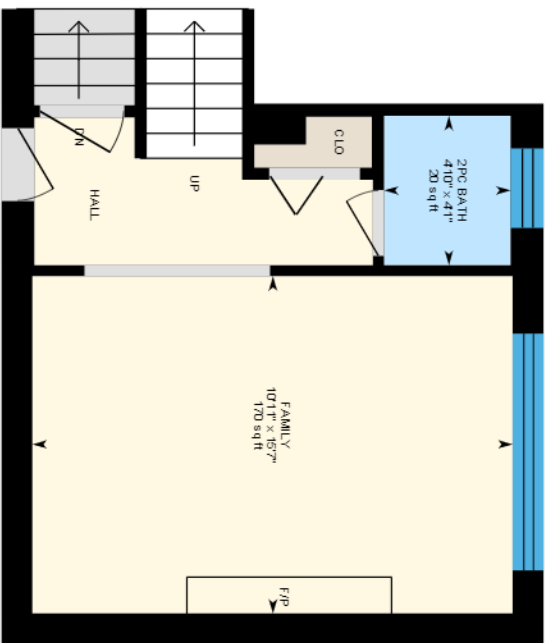


White regions are excluded from total floor area in iGUIDE floor plans. All room dimensions and floor areas must be considered approximate and are subject to independent verification.

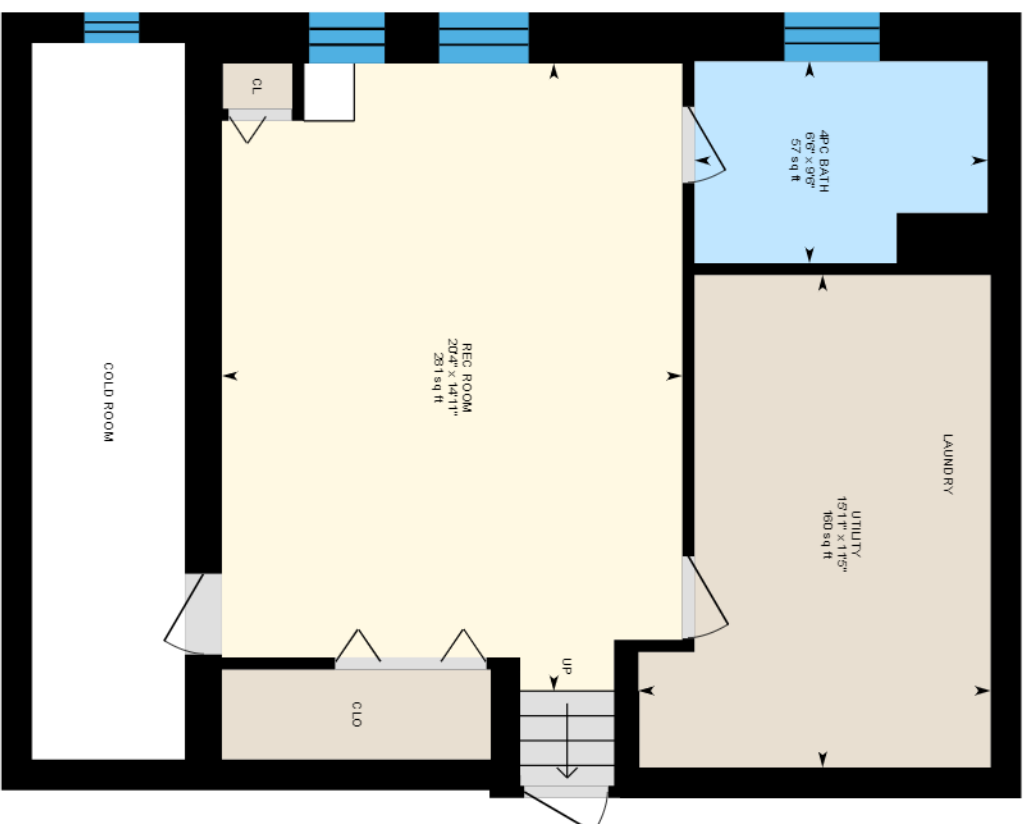
PREPARED: Jan 2021



517 Wyner Crescent, Oakville, ON



Lower level (Below Grade)
319 Sq Ft



Basement (Below Grade)
705 Sq Ft



White regions are excluded from total floor area in iGUIDE floor plans. All room dimensions and floor areas must be considered approximate and are subject to independent verification.

PREPARED: Jan 2021

